





## GENERAL CONDITIONS FOR THE RESERVATION OF A MEDITERRANEE MOBILEHOME

Mobile homes on site 290, < 4 years old

Concerning the converted site of an equipped mobile home (electricity 10 Amp.):

Reservation is on a weekly basis (1 or more weeks), arrival between 5 and 7 pm, departure between 8.30 and 09.30 am).

The FIXED deposit for a mobile home reservation, as well as the booking fee, are payable upon reservation; the balance and security deposit are due upon arrival, before the distribution of keys.

The booking fee (25€) and the deposit, due for an additional service, are not refundable. Booking fee offered if the whole stay (with Tourist Taxes) is paid upon reservation.

For any late (after 7 pm) arrival and/or without reservation, file fees (25€) will be charged.

The security deposit will be refunded at the end of the stay if no degradation has occurred to the equipment and if the mobile home is properly cleaned.

The reservation will not be effective until the deposit has been collected, which must be received **within 7 days** after reception of the reservation voucher. **For all reservations made less than 15 days in advance, the totality of the payment is due by bankcard only, offer valid for 48 hours.**

### **CANCELLATION IN THE EVENT OF JUSTIFIED FORCE MAJEURE:**

More than 6 weeks before arrival: full reimbursement of the deposit for a mobile home, less processing fee (25€).

Less than 6 weeks before arrival: no reimbursement.

Ask for the FFCC's cancellation insurance.

The arrival time is guaranteed for 24 hours, except with particular terms.

Animals are PROHIBITED for hygienic reasons.

The mobile home is intended for 2-4 persons, maximum, depending on the fee.

### **IMPORTANT:**

**THE BALANCE DUE ON THE RESERVATION OF A MOBILE HOME MUST BE PAID UPON ARRIVAL, as well as the SECURITY DEPOSITS 280 €** (equipment and cleaning). They will be repaid the day you leave: 200 € if nothing is lost or damaged, and 80 € if the Malaga is as clean as on your arrival, final cleaning done by yourself. At last the day before you are leaving, you have to ask for an appointment for the leaving inventory.

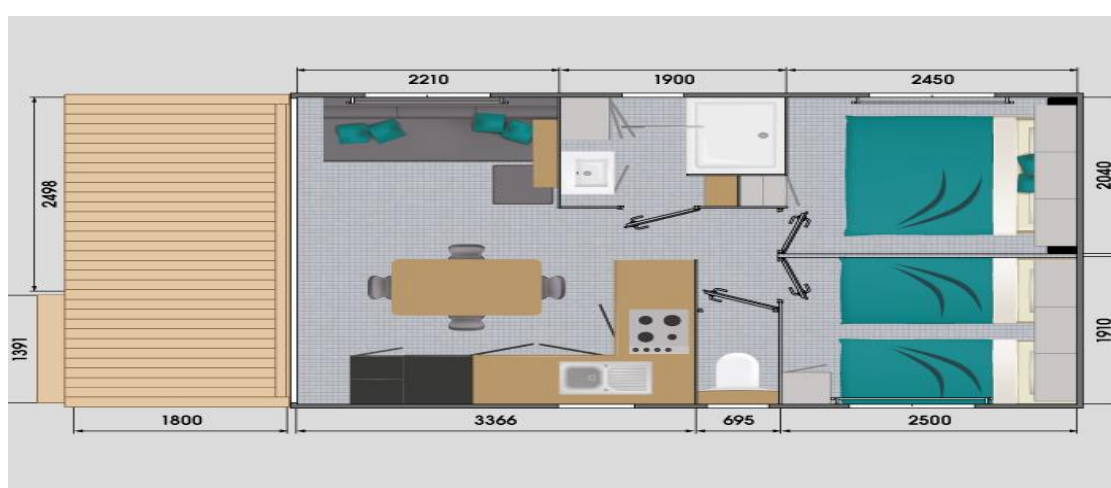
Any modification that may necessitate a change in charges must be signaled upon arrival.

For an earlier departure or later arrival, no repayment is possible, for any reason.

Clause conferring jurisdiction: any eventual litigation will be treated by the Tribunal of Grasse.

Dear Client,

These precisions are necessary to avoid any ambiguity. We thank you for your continued trust and hope that you will enjoy your next vacation with us.



## MEDITERRANEE MOBILE HOME INVENTORY ON PITCH 290

6 PLATES  
 6 HALLOW PLATES  
 6 SMALL PLATES  
 4 COFFEE CUPS  
 4 STACKABLE MUGS  
 4 BOWLS  
 4 EGG CUPS  
 1 SALAD BOW PIREX Ø 21 cm  
 1 SALAD BOWL ARCO Ø24 cm  
 1 ROUND HALLOW DISH Ø 28 cm  
 6 GLASSES FOR WATER  
 6 GLASSES FOR WINE  
 1 GLASS PITCHER  
 6 INOX FORKS  
 6 INOX BIG SPOONS  
 6 INOX SMALL SPOONS  
 6 KNIVES  
 1 FRYING PAN Ø28 cm  
 1 STEEL SAUCEPAN Ø 12 cm  
 1 STEEL SAUCEPAN Ø 18 cm  
 1 INOX STEW POT + GLASS LID  
 1 POTATO PEELER  
 1 COUTEAU OFFICE  
 1 SALAD SET  
 1 TABLE MAT  
 1 PLASTIC COLANDER Ø 26 cm  
 1 USTENSIL BASKET 5 CASES  
 1 TIN OPENER  
 1 TIRE CAP AND BOTTLE-OPENER  
 1 ROUND CASSEPOLE DISH & LID  
 1 KETTLE  
TO RENT ON DEMAND WHEN BOOKING:  
 BED LINEN /PERSON **15 €**  
 TOWELS /PERSON **7 €**  
 DISPOSABLE SHEETS/PERSON **6 €**  
 CLEANING FEE **80 €**  
 BABY KIT **25 €**  
 1 UMBRELLA BABY BED 60 X 120  
 1 MATRESSS + 1 UNDER SHEET  
 1 BABY FITTED SHEET  
 Bed linen and towels are not included

1 PLASTIC CUTTING BOARD  
 1 UNIVERSAL LID  
 1 WOODEN SPATULAS  
 1 NYLON SKIMMER  
 1 NYLON LADLE  
 1 SCISSORS  
 1 TRAY ICE CUBE  
 1 FLOOR CLOTH  
 1 BUCKET 10 L  
 1 NYLON BROOM  
 1 SMALL PLASTIC BROOM AND DUST SHOVEL  
 1 WC BRUSH + HOLDER  
 1 SQUARE PLASTIC BOWL 30 X 30  
 6 PLASTIC HANGERS  
 1 PLASTIC DOORMAT  
 1 CLOTH DRYER + CLOTH PINS  
 1 CARBAGE CAN 15 L + LID  
 1 TOASTER  
 1 WHITE ELECTRIC COFFEE MACHINE BOSCH  
 1 MICRO WAVE OVEN 20 L  
 1 COVER BELL FOR MICRO WAVE  
 1 TELEVISION + 1 REMOTE CONTROL  
 4 WHITE PILLOWS 60 X 60  
 4 UNDER PILLOW CASES  
 POLAIRE BLANKETS FOR 1 PERSON BED (80 X 190)  
 POLAIRE BLANKET FOR 2 PERSONS BED (140 X 190)  
 2 PLASTIFIED +2 COTTON UNDER SHEETS 80 X 190  
 1 PLASTIFIED +1 COTTON UNDER SHEET 140 X 190  
 3 BEDSPREAD 2X(80X190CM) 1x (140x190cm)  
 4 DECORATIVE CUSHIONS  
 PLEIN-AIR 4 PERSONNES  
 2 ARMCHAIR SUNBATHING WITH BACK ADJUSTABLE  
 1 OUTDOOR TABLE 140 X 90  
 4 OUTDOOR CHAIRS

Place .....Date

.....

Signature to be preceded by the mention "READ AND APPROVED"



# MOBIL HOME RENTAL MEDITERRANEE

1 Available < 5 years

## PRICES 2024

Excluding Tourist taxes \*

			Week	Nuit mini 3 <7 N	Nuit sup > 7 N
<b>MALAGA</b> 27 m <sup>2</sup>	<b>LOW SEASON*</b>	4 persons	<b>540 €</b>	<b>95 €</b>	<b>80 €</b>
	<b>SEASON 07.13-08.23.2024</b>	4 persons	<b>980 €</b>	<b>190 €</b>	<b>150 €</b>

\***TOURIST TAXES:** 0, 54 € /night/ person over 18 years

\***LOW SEASON:** 25 March – 12 July and 24 August - 15 October 2024

This set price includes the pitch + 1 car or 2 motorbikes + 4 people + water + electricity 10A.  
Rental per week, arrival between 5 and 7 pm, departure between 8.30 and 9.30am.  
For one more car or trailer, you must pay the exact fees.

**BOOKING OR SUPPORT FEES:** 25 €

FEES OFFERED IF TOTAL PAYMENT ON BOOKING  
200 €/week booked + 25 € files fees

Payment: visa card, master card or transfer, and the balance must be paid the day of your arrival + tourist taxes.

For any late (after 7pm) arrival and/or without reservation, file fees (25€) will be charged

For an earlier departure or later arrival, no repayment.

**DEPOSIT:** 280 €

200 € + 80 € for the cleaning = 280 € paid the day of your arrival. They will be repaid (200 €) the day you leave, if nothing is lost or damaged, and 80 € if the mobile home is as clean as on your arrival (final cleaning done by yourself). At last the day before you are leaving, you have to ask for an appointment for the leaving inventory.

### PETS ARE FORBIDDEN

**LINEN RENTAL:** 15 €/person on demand when booking  
**TOWELS RENTAL:** 7 €/person on demand when booking  
**DISPOSABLE SHEETS:** 6 €/person on demand when booking  
**FINAL CLEANING:** 80 €

All the lodgers benefit from all the campsite facilities: free access to the swimming pool (respect its rules), Tennis Court (price at the office), playground, fitness area, laundry (tokens at the office)...

As soon as possible, please tell us your date from Saturday to Saturday and the number you will be (adults and children)

### DISCOUNT LOW SEASON:

\* 2 weeks -10 %  
\* 3 weeks -15 %  
\* 4 weeks -20 %

### DISCOUNT SEASON:

\* 4 weeks -15 %