



GENERAL CONDITIONS FOR THE RESERVATION OF A PACIFIQUE MOBILE HOME

Mobile homes on sites 208 and 224 >5 years

Concerning the converted site of an equipped mobile home (electricity 10 Amp.):

Reservation is on a weekly basis (1 or more weeks), from SATURDAY (arrival between 5 and 7 pm) to SATURDAY (departure between 8.30 and 09.30 am).

The **fixed deposit** for a mobile home reservation, as well as the booking fee, are payable upon reservation; the balance and security deposit are due upon arrival, before the distribution of keys. The booking fee (25 €), due for an additional service, are not refundable. Booking fees offered if the whole stay is paid upon reservation.

The security deposit will be refunded at the end of the stay if no degradation has occurred to the equipment and if the mobile home is properly cleaned.

The reservation will not be effective until the deposit has been collected, which must be received **within 15 days after reception of the reservation voucher. For reservations made less than 30 days in advance and after 15th June, the response time is 7 days. For all reservations made less than 15 days in advance, the totality of the payment is due by bankcard only.**

For any late (after 7 pm) arrival and/or without reservation, file fees (25€) will be charged.

CANCELLATION IN THE EVENT OF JUSTIFIE FORCE MAJEURE:

More than 6 weeks before arrival, full reimbursement of the deposit for a mobile home.

Less than 6 weeks before arrival, no reimbursement.

Ask for the FFCC's cancellation insurance.

The arrival time is guaranteed for 24 hours, except with particular terms.

Animals are **PROHIBITED** for hygienic reasons.

The mobile home is intended for 2-4 persons, maximum, depending on the fee.

IMPORTANT:

THE BALANCE DUE ON THE RESERVATION OF A MOBILE HOME MUST BE PAID UPON ARRIVAL, as well as the SECURITY DEPOSITS 280 € (equipment and cleaning). They will be repaid the day you leave: 200 € if nothing is lost or damaged, and 80 € if the PACIFIQUE stays as clean as on your arrival, final cleaning done by yourself.

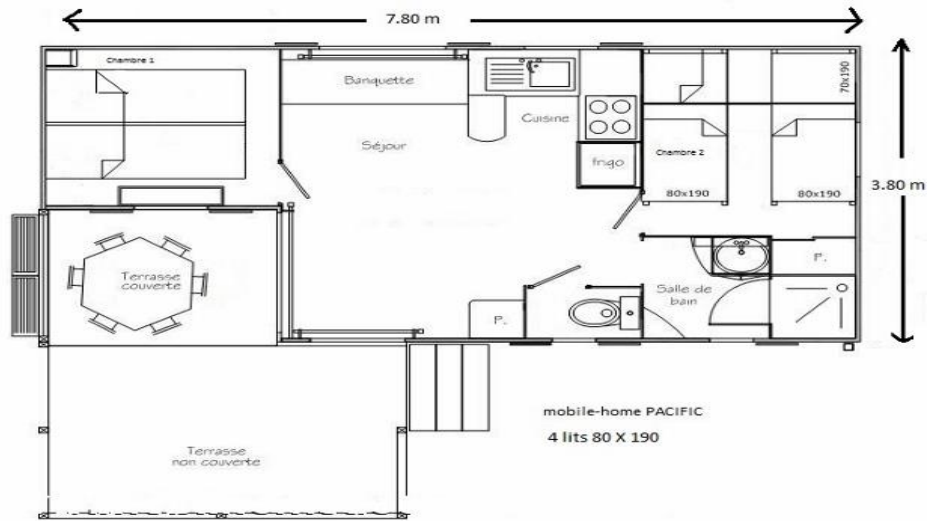
Any modification that may necessitate a change in charges must be signaled upon arrival.

Once the stay has begun, no reimbursement is possible in the event of early departure, for any reason.

Clause conferring jurisdiction: any eventual litigation will be treated by the Tribunal of Grasse.

Dear Client,

These precisions are necessary to avoid any ambiguity. We thank you for your continued trust and hope that you will enjoy your vacation with us.



7,80 m X 3,80 m - interior 30 m² + terrace m²

PACIFIQUE MOBILE HOME INVENTORY

ON PITCHES 208 AND 224

6 PLATES ARCO
 6 HALLOW PLATES ARCO
 6 SMALL PLATES ARCO
 4 COFFEE CUPS ARCO
 4 STACKABLE MUGS ARCO
 4 BOWLS ARCO
 4 EGG CUPS
 1 SALAD BOW PIREX Ø 21 cm
 1 SALAD BOWL ARCO Ø 24 cm
 1 ROUND HALLOW DISH Ø 28 cm
 6 TURQUOISE GLASSES FOR WATER
 6 GLASSES FOR WINE
 1 GLASS PITCHER
 6 INOX FORKS
 6 INOX BIG SPOONS
 6 INOX SMALL SPOONS
 6 KNIVES
 1 NON STICK FRYING PAN Ø 28 cm
 1 INOX SAUCEPAN Ø 12 cm
 1 INOX SAUCEPAN Ø 18 cm
 1 INOX STEW POT + GLASS LID
 1 POTATO PEELER
 1 COUTEAU OFFICE
 1 SALAD SET
 1 MELANINE TABLE MAT Ø 19 cm
 1 PLASTIC COLANDER Ø 26 cm
 1 USTENSIL BASKET 5 CASES
 1 TIN OPENER
 1 TIRE CAP AND BOTTLE-OPENER
 BED LINEN AND
 TOWELS ARE NOT INCLUDED
 ON DEMAND
 BED LINEN TO RENT /person 12 €
 TOWELS TO RENT /person 6 €
 DISPOSABLE SHEETS/person 6 €
 FINAL CLEANING 80 €

1 WHITE PLASTIC CUTTING BOARD
 1 WOODEN SPATULAS
 1 NYLON SKIMMER
 1 NYLON LADLE
 1 TRAY ICE CUBE
 1 FLOOR CLOTH
 1 BUCKET 10 L
 1 NYLON BROM
 1 SMALL PLASTIC BROOM AND DUST SHOVEL
 1 WC BRUSH + WHITE HOLDER
 1 SQUARE PLASTIC BOWL 30 X 30
 6 PLASTIC HANGERS
 1 PLASTIC DOORMAT
 1 CLOTH DRYER + CLOTH PINS
 1 CARBAGE CAN 15 L + LID
 1 WHITE ELECTRIC COFFEE MACHINE BOSCH
 1 MICRO WAVE OVEN 20 L
 1 COVER BELL FOR MICRO WAVE
 1 TELEVISION + 1 REMOTE CONTROL

4 WHITE PILLOWS 60 X 60
 4 UNDER PILLOW CASES
 BLANKETS FOR 1 PERSON BED (80 X 190)
 BLANKET FOR 2 PERSONS BED 140 X 190
 4 PLASTIFIED UNDER SHEET 80 X 190
 4 BED MOLLETONS 80X190

Outdoor furniture 4 persons
 2 TAUPE DECK CHAIR
 1 GREEN OUTDOOR TABLE 140 X 90
 4 GREEN OUTDOOR CHAIRS

Place Date
 Signature to be preceded by the mention "READ AND APPROVED"



PACIFIQUE MOBIL HOME RENTAL

2 available > 5 years

PRICES 2022

Excluding Tourist Tax*

			Week	Night mini 3 <7 N	Extra Night > 7 N	Extra people per Night
PACIFIQUE 25 m ²	MARCH-APRIL-OCTOBER	2 persons	330 €	55€	50 €	8.00 €
	MAI-JUNE-SEPTEMBER	2 persons	430 €	75 €	65 €	10.00 €
	SAISON JULY- AUGUST	4 persons	740 €	130 €	115 €	--

***TAX FOR VENCE CITY: 0, 40 € /night/person over 18 years**

This set price includes the pitch + 1 car or 2 motorbikes + 2 (or 4 = depends on the date) people + water + electricity.

Rental per week, from SATURDAY between 5 and 7 pm, to SATURDAY between 8.30 and 9.30 am

For one more car or trailer, you must pay the exact fees of the campsite.

BOOKING OR SUPPORT FEES : 25 €

(FEES OFFERED IF TOTAL PAYMENT ON BOOKING)

200€ down payment for booking + 25 € booking fees

Payment: visa card, master card or transfer, and you must pay the balance the day of your arrival + Tourist tax (for Vence City).

For any late arrival (after 7 PM) and/or without reservation, file fees (25€) will be charged

For an earlier departure or later arrival, no repayment.

DEPOSIT: 280€

200 € + 80 € for the cleaning = **280 €** paid the day of your arrival. They will be repaid the day you leave: 200 € if nothing is lost or damaged, and 80 € if the mobile home stays as clean as on your arrival (final cleaning done by yourself).

PETS ARE FORBIDDEN

LINEN RENTAL/PERSON:

12 € on demand when booking

TOWELS RENTAL/PERSON:

6 € on demand when booking

DISPOSABLE SHEETS/PERSON:

6 €

FINAL CLEANING:

80 €

All the lodgers benefit from all the campsite facilities: free access to the swimming pool (respect its rules),

Tennis Court (price at the office), playground, fitness area, laundry (tokens at the office)...

Please tell us on booking how many people you will be and for children how old they are.

DISCOUNT LOW SEASON:

* 2 weeks	-10 %
* 3 weeks	-15 %
* 4 weeks	-20 %